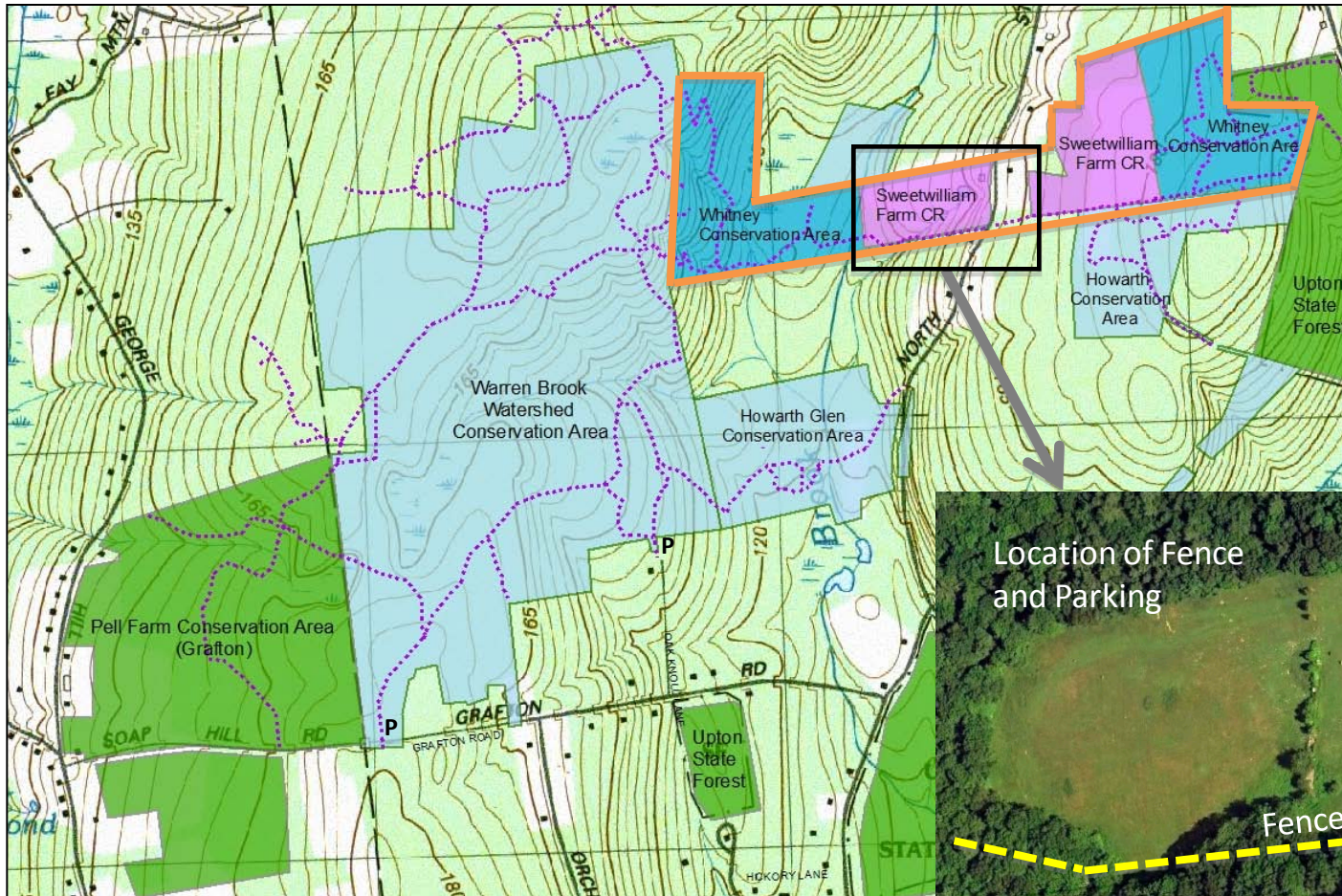


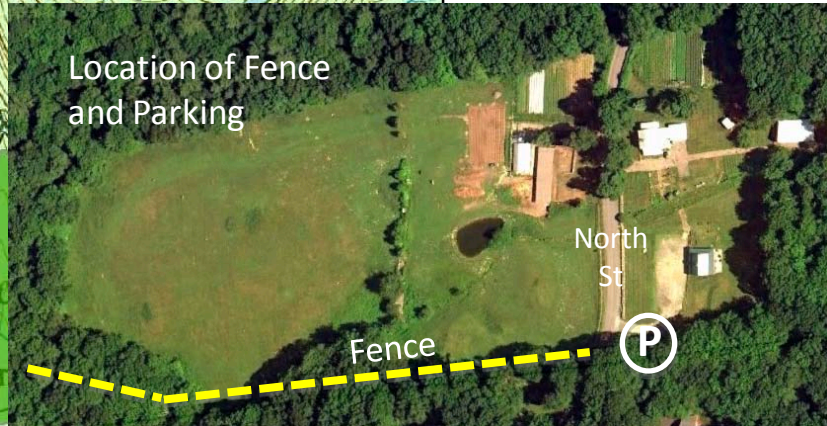
# The Trail Network

This map shows the trail network that will exist after the trail across Sweetwilliam Farm and the Whitney Conservation Area is completed. The inset shows the location of the fence and the parking lot

The trail will connect trails in **Upton State Forest** and **Howarth Conservation Area** to trails in **Warren Brook Conservation Area, Howarth Glen Conservation Area, and Grafton's Pell Farm Conservation Area**. This will create a **15+ mile trail network** with loops of various lengths and terrains with access from Grafton Road, Oak Knoll Lane, North Street, Howarth Drive and the Upton State Forest.



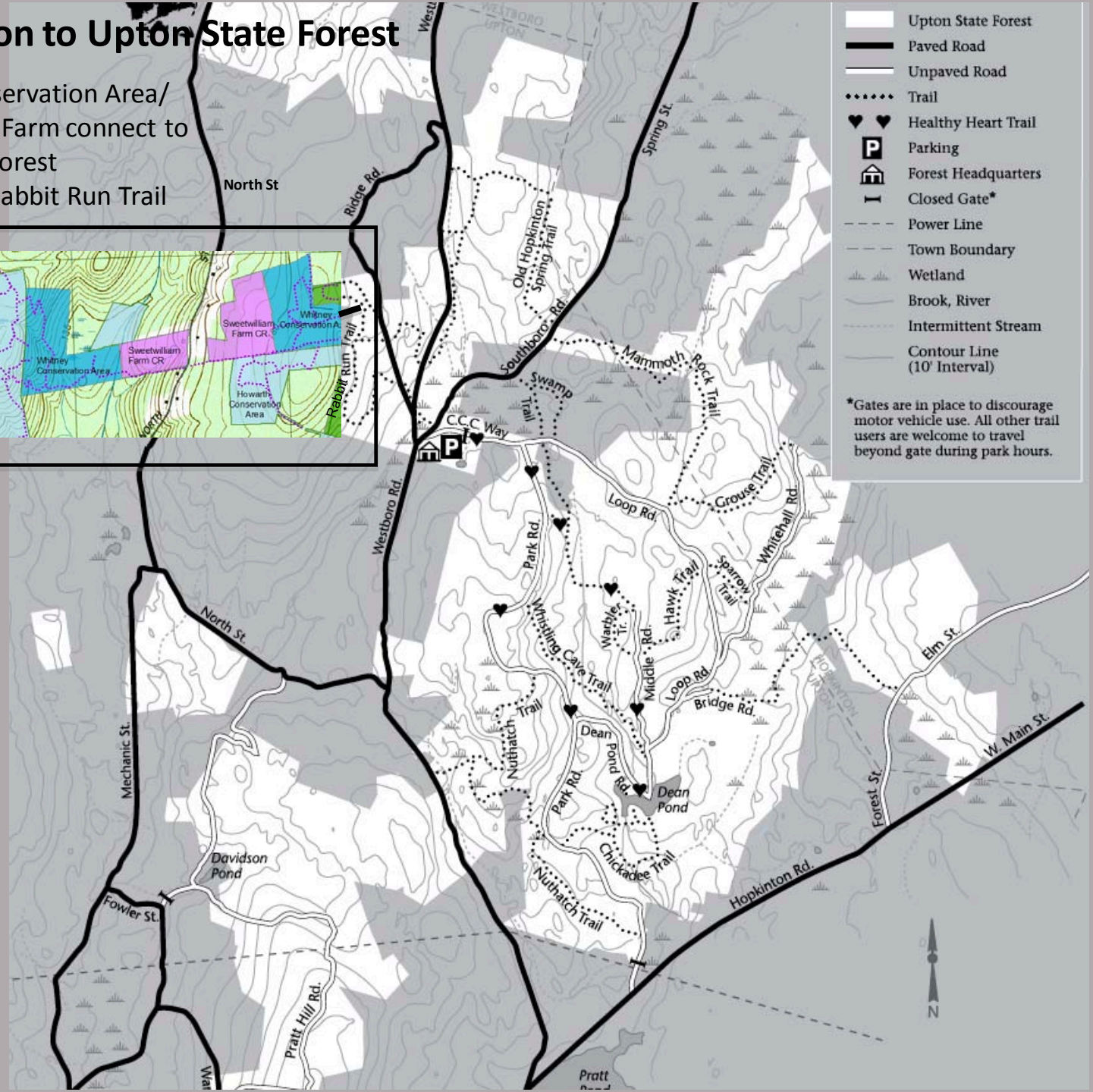
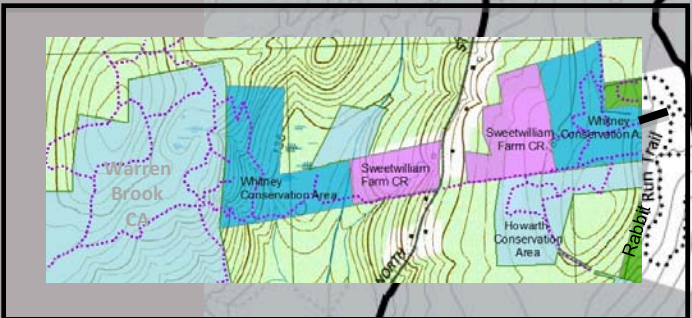
The trail across the Whitney Conservation Areas and Sweetwilliam Farm is complete except for a quarter-mile that skirts the pasture on the west side of North Street. The key to completing this portion of the trail is installing a fence to safely separate trail-users from animals in the pasture.



Location of Fence and Parking

# Connection to Upton State Forest

Whitney Conservation Area/  
Sweetwilliam Farm connect to  
Upton State Forest  
through the Rabbit Run Trail



- Upton State Forest
- Paved Road
- Unpaved Road
- Trail
- Healthy Heart Trail
- Parking
- Forest Headquarters
- Closed Gate\*
- Power Line
- Town Boundary
- Wetland
- Brook, River
- Intermittent Stream
- Contour Line (10' Interval)

\*Gates are in place to discourage motor vehicle use. All other trail users are welcome to travel beyond gate during park hours.

